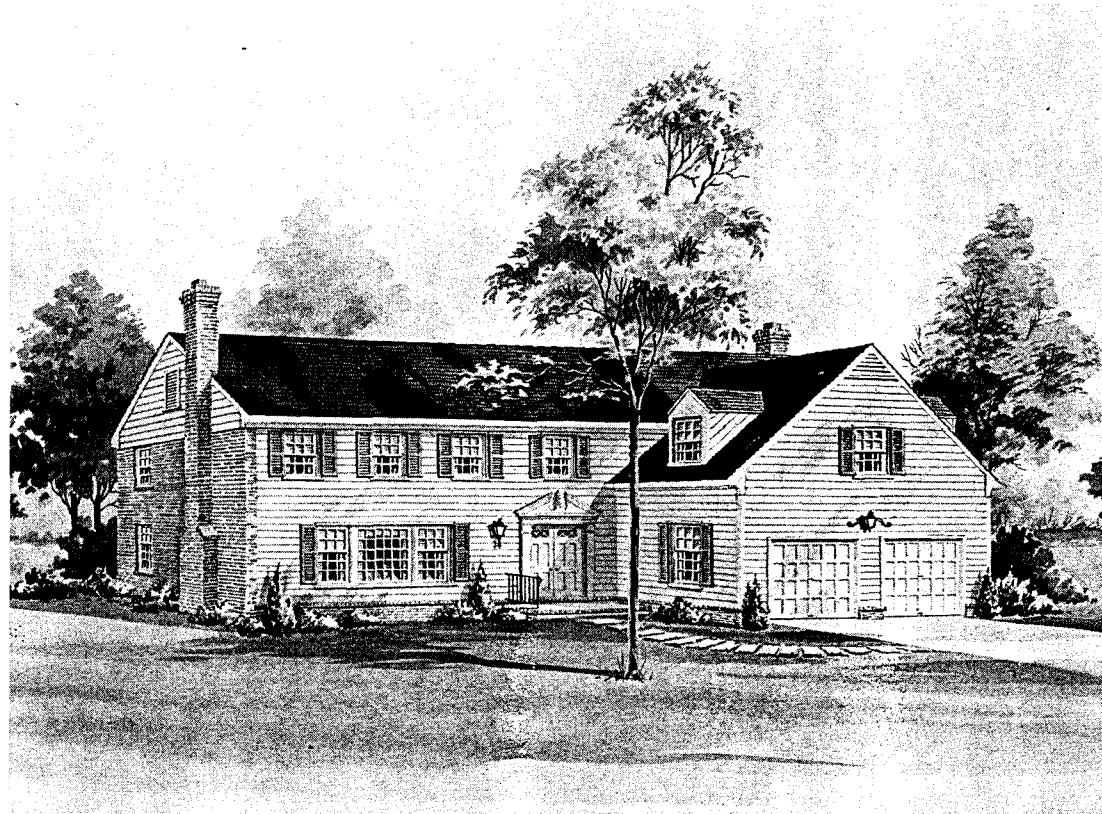


# THE BALTIMORE HOUSE

The Baltimore House receives its name from historic Baltimore County, established in 1659, which was so-called in honor of George Calvert, 1st Baron Baltimore, a prominent English statesman and the holder of immense tracts of land and flourishing estates. His son, Leonard Calvert, became Governor of all of Maryland province from 1634 until his death in 1647.

The earliest settlements within this territory were probably those on Palmer's Island at the mouth of the Susquehanna River where Virginia's Governor Claiborne and his followers built settlements as early as 1627.

Almost entirely blanketed by woods, Baltimore County's few settlements were confined to the waterways which proved to be their life-line. The vastness provided by the unexplored forests behind the settlers and the easily traversed waterways in their midst gave a feeling of compactness, relative security, and privacy to the settlement.



The colonial design of the Baltimore House expresses the distinguished heritage of Baltimore County. A wide expanse of windows and handsome Federal double door entry set the tone for this imposing home. The design pictured above is but one of the distinguished exteriors created for the Baltimore House by Patterson & Worland, A.I.A.

## KETTLER BROTHERS, INC.

*Plans copyrighted by Patterson & Worland, A.I.A., and Kettler Brothers, Inc.*

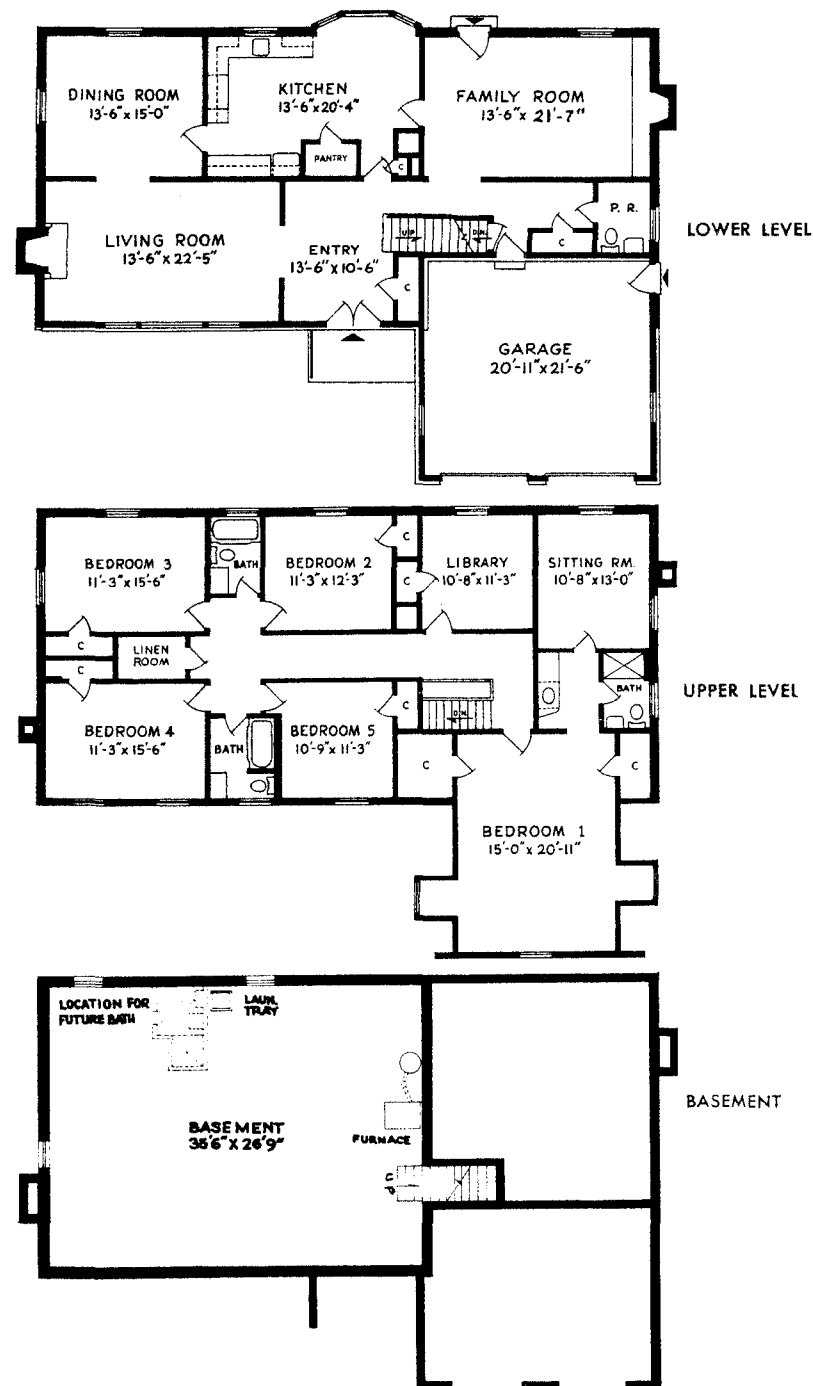


The classic formality of the exterior of the Baltimore House is extended into an interior of dignity and grace. The foyer is exceptionally spacious, allowing both the opportunity to set the decorating atmosphere of your home and allowing you to receive with ease a large group of guests. In the living room the triple window and the fireplace will be assets to your decorating, and this formal theme is carried over into the separate dining room where your guests overlook the garden as they dine. The fully equipped kitchen is a delight to work in, and you will especially enjoy your informal meals in the setting of its rustic beamed ceiling and charming bay window dining nook. Another fireplace—this one in rough-textured stone (reminiscent of the stone houses in the Piedmont area of Baltimore County)—creates a feeling of warmth in the family room. There is, of course, a powder room on this same level. Notice that in addition to the two-car garage, the first floor storage includes two large coat closets, a broom closet and the walk-in kitchen pantry. The large white walled basement provides your laundry area, a rainy-day playroom, bulk storage space, hobby space and room for billiards or ping pong. Plumbing is available here for future half bath and maids room.

The maintenance of well being in a family depends, to a great extent, upon the privacy and seclusion that is available to them when they desire it. The upper level of the Baltimore has been carefully designed for this quiet and privacy. There are five bedrooms here, and an abundance of storage and closet space, note especially the walk-in linen room. There are two centrally-located family baths, one compartmentalized for further privacy. A library is provided for reading, or may serve as a children's playroom. The owners' suite in addition to the large dormered bedroom includes a private sitting room as well as an adjoining bath and dressing room. Naturally provisions have been made for the necessary closet space. Also, this bedroom-sitting room combination enjoys four exposures—one to every side of the house.

The Baltimore House is truly one of the most distinctive and luxurious new homes being built today, drawing its inspiration from our American heritage of excellence in traditional architectural design.

# THE BALTIMORE HOUSE



KETTLER BROTHERS, INC.