

THE CALVERT HOUSE

The first mention of Calvert County occurred in July 1654, when the Council of Maryland decided in accordance with the instructions received from the Lord Proprietor to:

"Erect, make, and appoint both sides of Patuxent River into one County by the name Calvert County. Bounded on the South Side with Pynehill River or Creeke to the head there of and from thence through the woods to the head of Patuxent River. . . ."

Calvert County was named in honor of Cecilius Calvert who was the second Lord Baltimore and the first Lord Proprietary. He has been characterized as being "less energetic and more cautious than his father" (George Calvert, the first Lord Baltimore) "but with all his shrewdness, practicality and breadth of vision."

In October of 1654 as a result of the emotional climate generated by the Protestant revolution it was decided to eliminate the name of Calvert, and the county's name was changed briefly to Patuxent County. The name of Calvert was restored in 1658 when the government of the Province became again established in the hands of Calvert's representatives.



A home richly traditional and designed with a wealth of fine detailing. The texture of brick is skillfully balanced with handsome wood siding, making the entrance design and tall living room windows the focal point of the facade. The carriage lamp provides an atmosphere of warmth and welcome, pride and pleasure. The design pictured above is but one of the distinguished exteriors created for the Calvert House by Patterson & Worland, A.I.A.

KETTLER BROTHERS, INC.

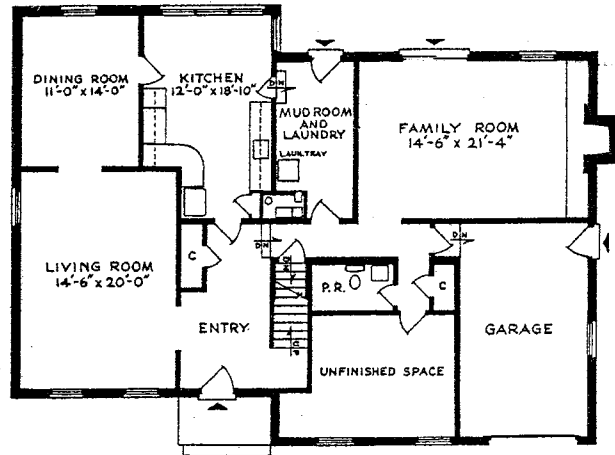
Plans Copyrighted by Patterson & Worland, A.I.A. and Kettler Brothers, Inc.



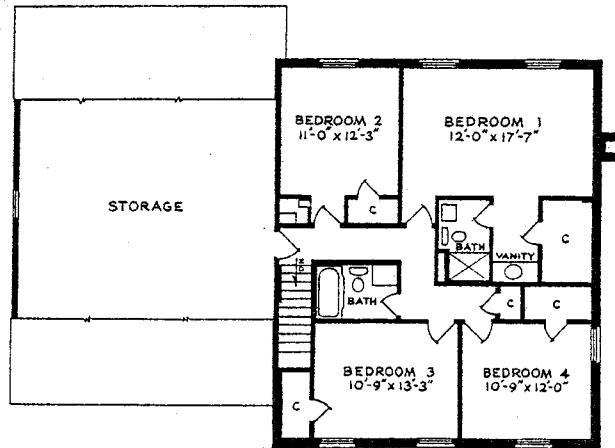
THE CALVERT HOUSE

The Calvert House is a study in informal, yet elegant living. The large entry foyer and hall immediately create a sense of space, and this feeling continues as one enters the living room with its long, unbroken walls and large bright windows. Overlooking the rear garden, the separate dining room is equally suitable for family meals or formal dinner parties. Informal meal space is provided in the kitchen, where a beamed ceiling and corner picture window add to the charm of your surroundings. Also, the preparation of meals will be simplified as you discover the benefits of the efficiently designed work area and open floor space. A first floor storage and laundry room with handy mud room entry from the outdoors creates further convenience for the busy homemaker. Sliding glass doors to the garden and a full wall fireplace in the family room will make this large and delightful wing the scene of a multitude of family activities and informal gatherings. There is a handy powder room across the hall and a second coat closet. A large storage room on this floor means that you can tuck away sports equipment, children's toys and masses of other paraphernalia without the usual effort and inconvenience of carting it either to the basement or the attic. (Please note, that plumbing, heat and electricity are provided in this area so that the storage room can be converted into a library or fifth bedroom with closet and the powder room can be converted into a full tub bath.) And yet a further convenience—the garage enters into the lower hall to facilitate your grocery carrying. The basement is handy from this lower hall. Here is all the space you need for rainy day play, hobby or workshop, billiards, ping pong or bulk storage.

Upstairs in the Calvert House there are four generous bedrooms which enjoy privacy and quiet. There is a large, centrally located family bathroom with large mirror and vanity. The owners' suite includes a huge walk-in closet, a private dressing room with dressing vanity, and a separate, well appointed bath. The bedroom is extra-large so it can easily include an area decorated as a private sitting space. A laundry chute adds to your convenience on this floor. A doorway from the hall leads directly to an old fashioned lighted storage attic. The Calvert House provides a well planned home with balanced space—especially suitable for the growing family or a family with more than two adults.



LOWER LEVEL



UPPER LEVEL

KETTLER BROTHERS, INC.

Plans Copyrighted by Patterson & Worland, A.I.A. and Kettler Brothers, Inc.