

THE CARROLL HOUSE

Carroll County derived its name from Charles Carroll, a signer of the Declaration of Independence and agent of Lord Baltimore.

The county's inhabitants descended from the Scotch-Irish in the vicinity of Gettysburg and the Germans of York County, as well as from the English stock who worked their way inland from the settlements along the tidewater. As early as 1740 the Monocacy Road had pack-horse travel from Hanover westward to the Potomac. This became the line of settlement during the early stages of development.

Although established long after the boundaries of the State had been finally settled, the territory of Carroll County was the scene of bitter controversy, often accompanied by bloodshed, regarding the territorial limits of Pennsylvania and Maryland about the middle of the eighteenth century.



The Carroll House demonstrates forethought in home design. Good architecture enables you to own this home with pride and confidence. The wide front chimney provides balance with the opposite wing. The recessed front porch offers an extra note of welcome to your guests. The design pictured above is but one of the distinguished exteriors created for the Carroll House by Patterson & Worland, A.I.A.

KETTLER BROTHERS, INC.

Plans Copyrighted by Patterson & Worland, A.I.A. and Kettler Brothers, Inc.

THE CARROLL HOUSE

The concept of living embodied by the design of the Carroll House is that of a separation of activities providing both privacy and flexibility. This home would be especially enjoyed by the active family whose members desire the opportunity to join together in activities or to go each their separate ways depending on their desires.

For those occasions when formality is desired, and to inspire your own creative decorating, the living room is spacious and bright and distinguished by a handsome fireplace. The separate dining room affords enough space for large dinner parties, and offers a pleasant view of the rear garden area. Informal meals are a delight to prepare and serve in the comfortable, efficient kitchen with its famous Kettler walk-in pantry.

A second fireplace lends a glow to informal gatherings in the family room, and here you'll appreciate the convenience of the sliding glass door entry to the terrace. For those seeking privacy and quiet, there is a paneled library with extra closet and an adjoining powder room. This extra room can also serve as a television hideaway, office or guest room.

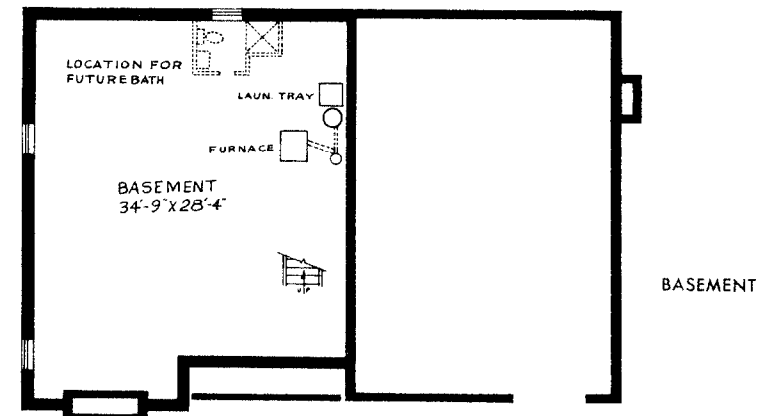
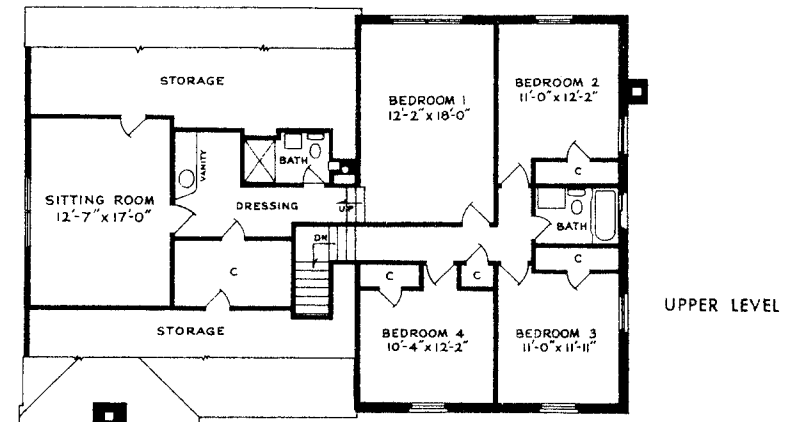
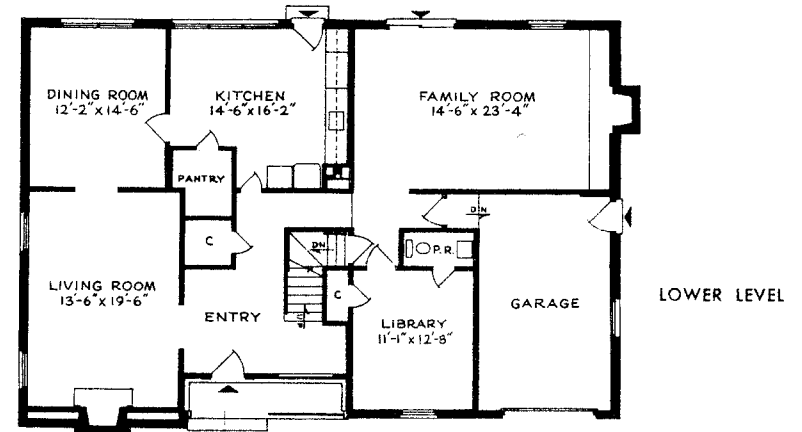
The large entrance hall distributes traffic directly to all activity areas without intruding. Easy access to the garage rounds out the convenient plan of the first floor. The large basement with bright white walls provides ample space for laundry, workshop, ping pong, rainy day play and extra bulk storage.

THE UPPER LEVEL

Privacy in the Carroll House also means private, quiet, secluded bedrooms for all, and extra luxury for the adults. Four bedrooms are found on the upper level of this home. The storage space that is plentiful throughout the home is especially apparent in the bedrooms and the linen closet. A centrally located family bath contains a large wall mirror and vanity.

But the private owners' suite, we think you will agree, is a masterpiece of special comfort, spaciousness and elegance. First, there is a large, bright bedroom eighteen feet in length. Up three short steps you have your private bath, dressing room, and (sixty three square foot) walk-in closet, large enough to take an extra dresser. And, beyond the dressing room, where nothing will disturb you, is your own sitting room. Here, the adults of the family can relax in seclusion and quiet, truly away from the cares of the day. Abundant attic storage is provided in easy access cubby holes adjacent to the owner's suite.

We believe that the Carroll House offers an unusually fine living plan for the family who is seeking a distinctively designed home of lasting value.



KETTLER BROTHERS, INC.