

# THE DORCHESTER HOUSE

The earliest mention of Dorchester County to be found in Maryland's provincial records was in 1669. At that time it was known as the "District of Dorset"—the area was wrested from the Nanticoke Indians in 1667 under order of Governor Calvert. Dorchester is a heart-shaped peninsula centrally located on the Eastern Shore—having the Choptank River as its northern boundary, the Nanticoke River as its eastern boundary and the Chesapeake Bay as the western boundary. Today it is the largest of the nine counties comprising Maryland's Eastern Shore. Water covers one hundred eight square miles of its mass.

Dorchester's people are proud of their shore traditions; hunting, fishing, seascapes and boating. Old fashioned box-wood gardens, tree lined streets, gracious living, stately old homes and warm hospitality all are the trademarks of Dorchester County. It's been said the county's greatest asset is its people. Their warm manner welcomes both friend and stranger into their homes and community life. Tourists from distant points enjoy the sport of the land and dine on steamed crabs, braised muskrat, oyster stew, fried shore chicken, roast goose and wild duck.

The people proudly recall the past when Annie Oakley lived and also practiced her marksmanship on the shores of the Choptank. In Cambridge, the county seat, the courthouse, portions of which were built in 1853, stands on its original site, as a reminder of a proud past.



This handsome two-story home has been carefully designed for gently sloping ground. The garage and daylight basement area in the rear actually create a third useable level. The particular exterior treatment shown here is one of a distinctive series of traditional exteriors created by architects, Patterson and Worland, A.I.A.

## KETTLER BROTHERS, INC.

*Plans Copyrighted by Patterson & Worland, A.I.A. and Kettler Brothers, Inc.*



# THE DORCHESTER HOUSE

The Dorchester is a most formal and most friendly family-conscious home. The many activities of the active family have been carefully translated in this plan.

From the graceful entry foyer at the front of the main level flows a pattern of casual movement, yet separate containment. Guests can be easily greeted and ushered to the formal living room where traditionally-styled windows enhance the spacious setting.

Large scale entertaining or friendly, private family dining are equally accommodated in the separate dining room. The view from the dining room is to the rear garden. A beamed ceiling adds charm to the fully-equipped, family-sized kitchen and breakfast alcove. A storage bonus in the kitchen is the Kettler walk-in pantry which adds abundantly to the other generous storage facilities. Notice the workable arrangement of appliances.

An entire wall of the family room is brick with a raised hearth and handsome fireplace. Its warm effect is complimented by the colonial oak flooring of this room. Sliding glass doors open to a concrete deck or back porch with railing and there are stairs to the garden.

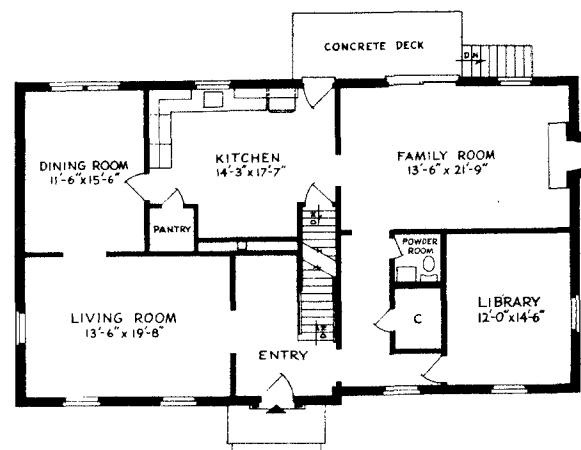
The panelled library to the front of the house is ideal for study or relaxation. A powder room and guest closet conveniently round out the first floor plan.

Besides bulk storage, laundry and garage, the bright, daylight basement allows plenty of space for a future above ground recreation room. Sliding doors to the covered portico and garden are provided, and the basement also has a roughed-in powder room.

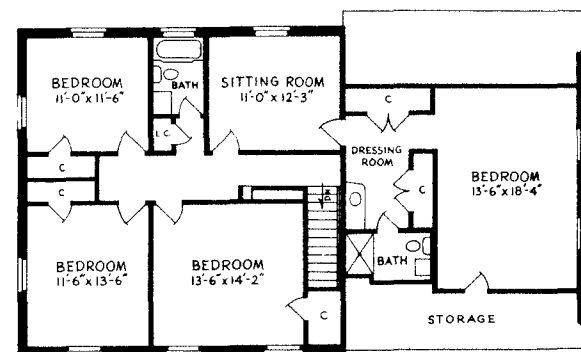
The private and secluded owners' suite is a highlight of the upper level. There is a private sitting room designed exclusively for the adults of the family. Here the privacy is enhanced by your own compartmentalized bath, and separate dressing room that adjoin the sitting room and the bedroom. The completely private owners' bedroom provides seclusion and allows you to retreat to this luxury away from other household activity. There is access from the owners' bedroom to a lighted cubby hole storage area.

The family bath is centrally located near the three children's bedrooms. Note the linen closet close by. As an added bit of convenience a step-saving laundry chute to the basement assists in household organization. Large closets and attic storage fulfill all your storage needs.

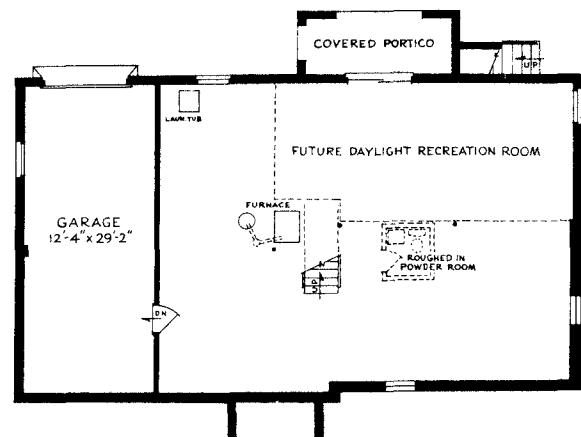
The Dorchester adds completeness to family life through its pleasing and comfortable plan.



MAIN LEVEL



UPPER LEVEL



DAYLIGHT BASEMENT

KETTLER BROTHERS, INC.

Plans copyrighted by Patterson & Worland, A.I.A., and Kettler Brothers, Inc.