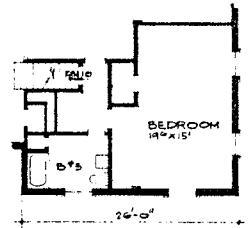
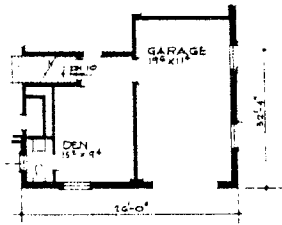
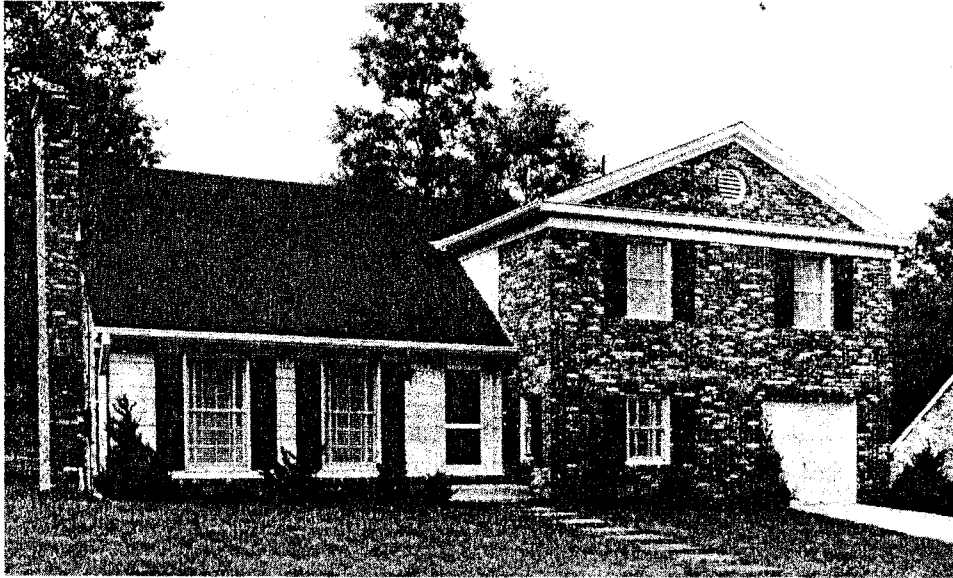
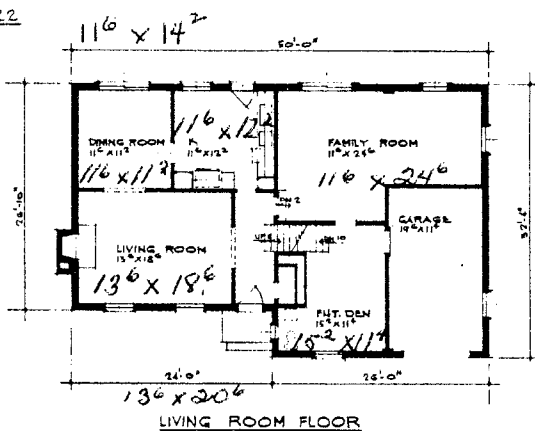


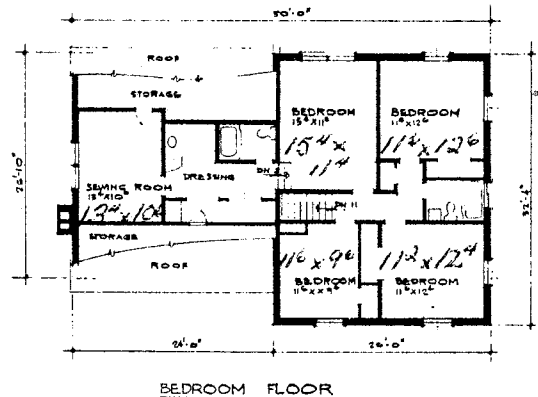
# THE EMBASSY



A-22



A-23



**W**E HAVE found that the ultimate test of a new home design is its acceptance by home owners. Research, planning and study with the aid of our architects, Patterson and Worland, A.I.A., led to development of this plan after many hours of thought. Within the first year after we introduced "The Embassy", it became one of America's best selling fine homes.

The undoubted highlight of this handsome home is the thirty-six foot owner's suite—which includes a full sized bedroom, a compartmentalized full bath and shower, a large dressing room with dressing vanity, and a private sitting room.

Throughout the home, we invite you to note the

careful separation of activity areas in their natural sequence. The four bedroom "quiet level" is tucked away upstairs; the formal level and guest entrance is appropriately separated from the more informal family room area; and again, the place for exercise and do-it-yourself activities is provided in the well-removed basement area.

Added to the features mentioned above, the attention to time-tested traditional design, coupled with Kettler quality, craftsmanship, and service, is your assurance of a sound investment.

As in all Kettler-built homes, a variety of customizing features are available, by means of which an individual family can adapt "The Embassy" to its particular needs and desires.

**KETTLER BROTHERS, INC.** . . . building the "Economy of Quality" into every home

Builders of fine homes in Country Club Hills, Barcroft Woods and Falls Hill in Virginia; Cohasset, Springfield, Old Farm, Oakwood Knolls and High Point in Maryland.

Plans copyrighted by Patterson & Worland, AIA, and Kettler Brothers, Inc.