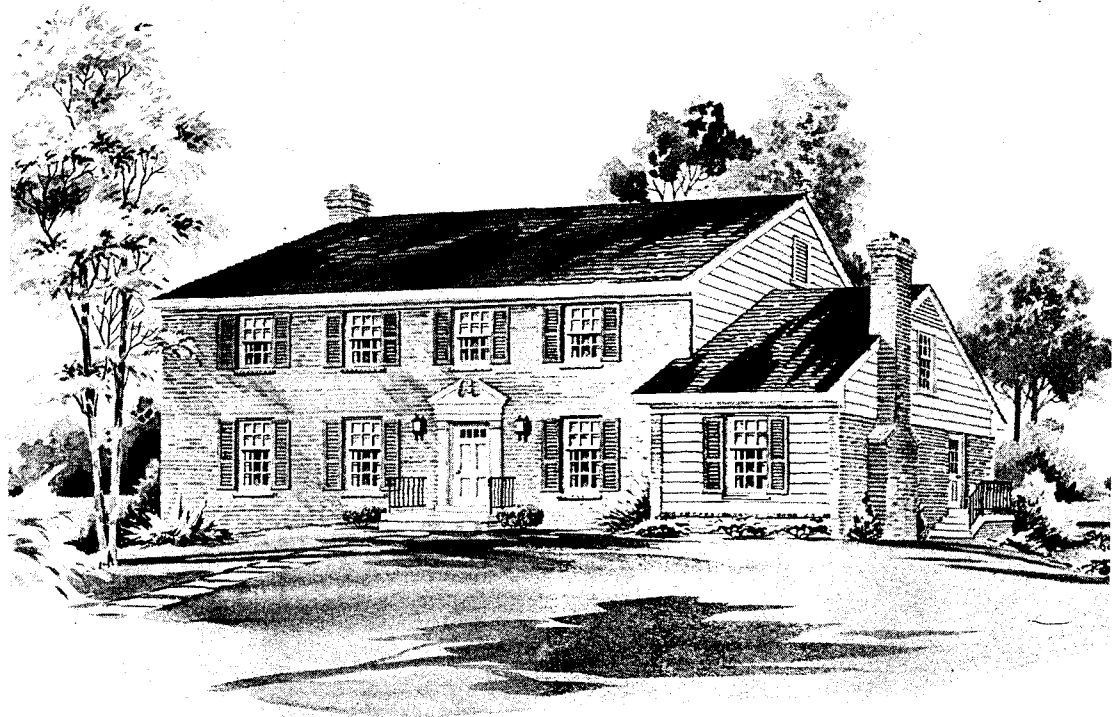


THE HARFORD HOUSE

Settlements of a temporary or permanent character in what is now Harford County probably date back to the days of William Claiborne of Virginia and his partners when they erected a trading post with the Indians on the island opposite Havre de Grace in 1627-29. One of the earliest permanent settlements was that of Col. Utie on Spesutie Island, which was made about the time of the treaty with the Susquehanna Indians, concluded in the year 1652. Soon after a small but thriving settlement sprung up on the Bush River. It was here that the original Baltimore town, which became for a time the county seat of Baltimore County, was situated, though nothing but a few remnants of masonry mark its former site. The occupation of the shores along the estuaries of the Gunpowder and Bush rivers as well as the banks of the Chesapeake, took place rapidly and land was patented up Winter's and Bynum runs prior to 1700. By 1750 the southern part of the county was in private hands. When the county was established in 1773 most of the settlements were still along the streams and routes of travel across the Piedmont.



Colonial charm is captured in many-paned, shuttered windows, federal detailed design of the front door and rich brick combined with wood. You can be confident The Harford will reflect dignity and unquestionable good style over the years. The design pictured above is but one of the distinguished exteriors created for The Harford House by Patterson & Worland, A.I.A.

KETTLER BROTHERS, INC.

Plans copyrighted by Patterson & Worland, A.I.A., and Kettler Brothers, Inc.



The Harford House has been designed to satisfy the family's need for a separation of activities. This home takes maximum advantage of opportunities afforded by sloping terrain.

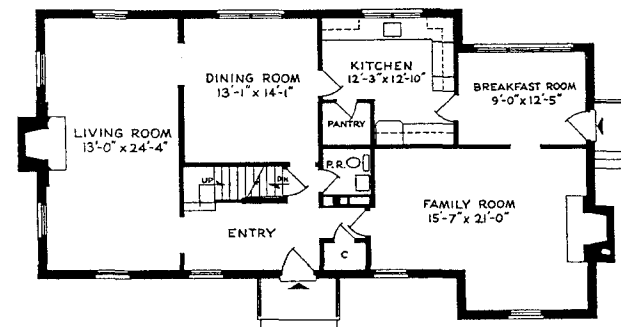
The welcoming entry leads into a lavishly scaled living room with formal fireplace which naturally increases decorating potential. A formal dining room for special occasions adjoins the living room and overlooks the garden. A cheerful kitchen with a Kettler pantry leads into a separate breakfast room just perfect for informal family meals. The beamed ceiling and a second fireplace with raised hearth in the family room create a mood of relaxation and family enjoyment. A powder room is convenient to every room on the first floor.

From the center of the first floor you descend to a 52 foot daylight basement with sliding glass doors to the garden. Here you will have all the future expansion room you need. The design of this ground level area includes your garage, laundry, storage and hobby space as well as availability of plumbing, heating and electric for future addition of recreation or billiard room and another powder room.

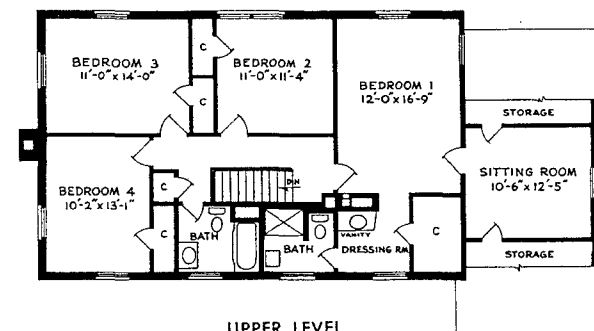
Upstairs, a division of privacy is quite evident. The children's wing includes three bedrooms with generous closets and a large bath. A linen closet and a laundry chute are conveniently located in the hall. Closing the door of the owners' private suite you will enter the grand bedroom with a bath, dressing room, walk-in closet and vanity exclusively for the owners. This magnificent suite includes a separate sitting room for your complete quiet and privacy. Plenty of cubby hole storage is available here.

A unique opportunity of this home is afforded by the protected play area with the large concrete driveway turnaround in the rear yard. The Harford House offers traditional charm with modern efficiency. Knowledge of families and how they choose to live dictated its plan.

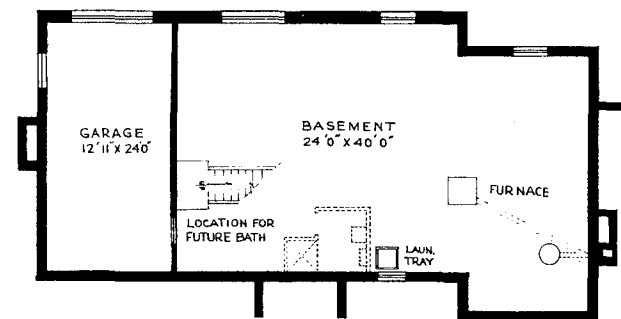
THE HARFORD HOUSE



LOWER LEVEL



UPPER LEVEL



DAYLIGHT BASEMENT

KETTLER BROTHERS, INC.

Plans copyrighted by Patterson & Worland, A.I.A., and Kettler Brothers, Inc.