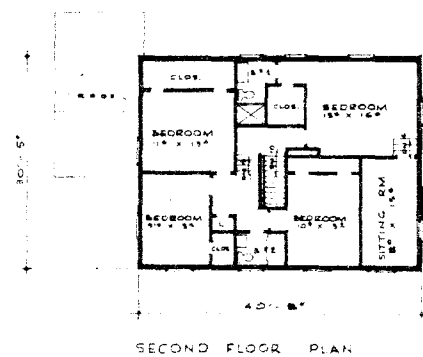
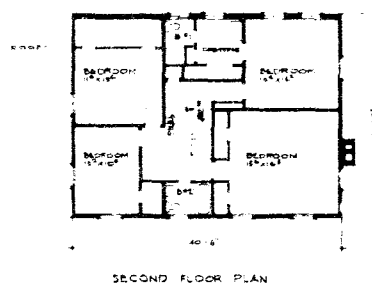
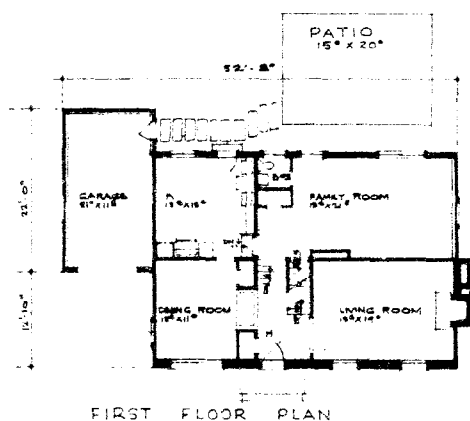
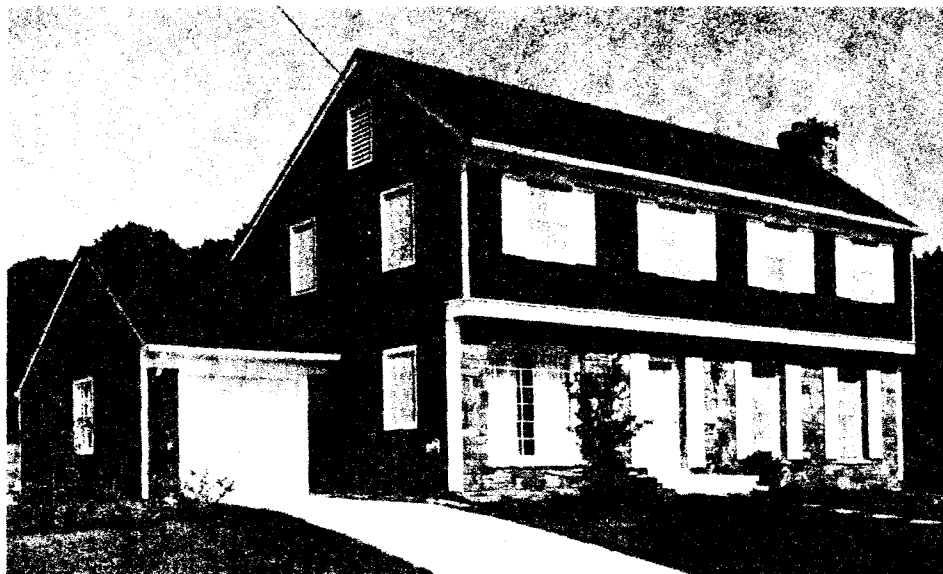


LONGMEADOW



Note: Basement Plan Not Shown

THIS TRULY American home, created from the drafting boards of Patterson and Worland, A.I.A., brings forth a refreshing return to beauty and dignity of design. The security of your investment can be assured in this time-tested and classic home. The interior of the Longmeadow is a careful blend of formality with practicality—the rooms and areas fit quietly together. Through thought and care this home provides for your entertaining for the few or many, for a winter buffet by fireplace hearth, or for a summer cook-out on the patio.

When your home is needed for the family use, you will find that your privacy has been well protected. The “quiet level”—with its four generous

bedrooms, provides space for study, sleep, hobbies or daytime naps. The owner's suite has been carefully designed and located to accommodate late hour hi-fi or conversation. The living room is a quiet dead-end which can conveniently be kept neat and tidy for unannounced guests. The “control center” (i.e. kitchen) is uniquely planned; it's less than 20 feet from the front door, adjacent to the family room, affords a view of the rear yard and garden, provides ample table and breakfast space, and is still only a few steps from the garage and patio.

The Longmeadow is truly a family home that you and your children will love to live in.

KETTLER BROTHERS, INC. . . . building the “Economy of Quality” into every home

Builders of fine homes in Country Club Hills, Barcroft Woods and Falls Hill in Virginia; Cohasset, Springfield, Old Farm, Oakwood Knolls and High Point in Maryland.

Plans copyrighted by Patterson & Worland, AIA, and Kettler Brothers, Inc.