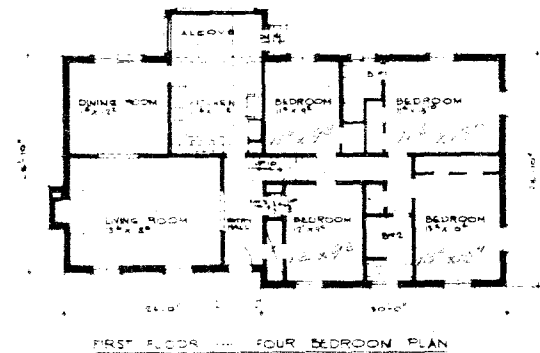
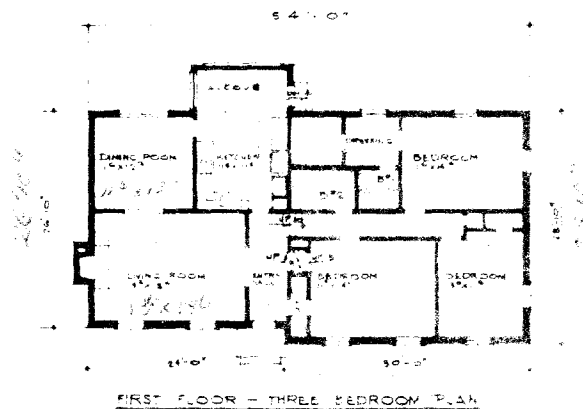
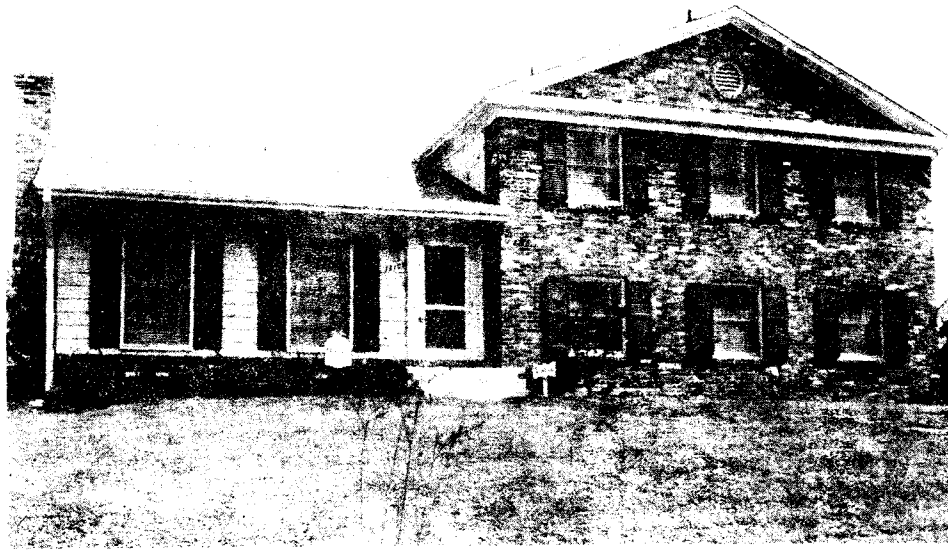
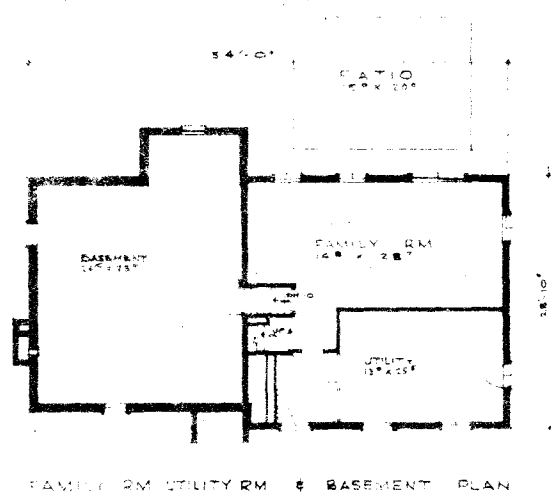


THE OAKFIELD



THIS EIGHT room home has been planned to combine the grace of American traditional design with the needs of modern family living. The architects, Patterson and Worland, A.I.A., have paid special attention to interior plan and traffic flow. Please note the central location of the family kitchen and the cheerful breakfast bay; they are immediately available to the front door through the entrance hall; they are only a step from your summer dining room (the patio); for formal entertaining, they are near to living and dining rooms, and for informal parties they are conveniently near the family room. Quiet space is set aside on one level in the four bedrooms upstairs; play and hobby space is waiting in the daybright utility room and basement. A wide variety of customizing selections are offered in order that this home may be adapted to your individual family needs.



KETTLER BROTHERS, INC. . . . building the "Economy of Quality" into every home

Builders of fine homes in Country Club Hills, Barcroft Woods and Falls Hill in Virginia; Cohasset, Springfield, Old Farm, Oakwood Knolls and High Point in Maryland.

Plans copyrighted by Patterson & Worland, A.I.A. and Kettler Brothers, Inc.