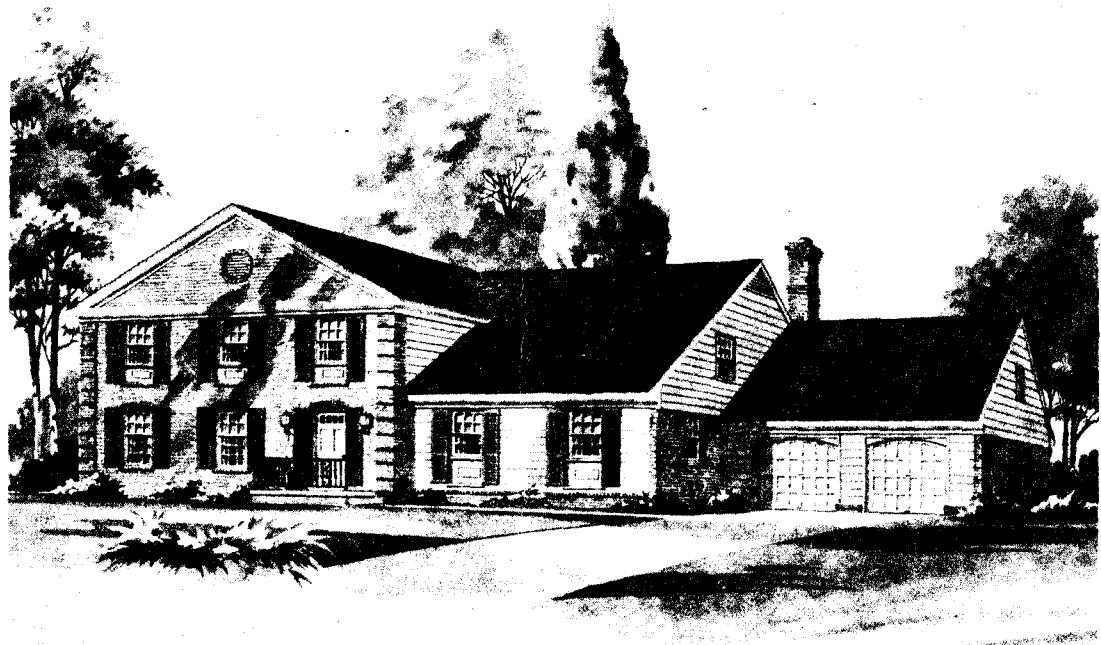


THE SOMERSET HOUSE

Settlements were made in the territory now forming part of Somerset County in the early years of the planting of Maryland in about 1661. Other settlements were also made on the eastern shore of Virginia around the same time. By 1663 the boundary disputes were sufficiently frequent to cause correspondence between Governor Calvert and the Governor of Virginia. August 22, 1666, Cecilius, Lord Baltimore proclaimed a new county for Maryland and called it Somerset in honor of his sister Mary Somerset. The erection of this county was but one of many steps taken by the proprietor to stimulate settlement along that portion of his territory on the Eastern Shore which was gradually becoming occupied by people from the Delaware side who held patents from representatives of the Duke of York.



The Somerset House has the same beautiful elements of design that have earned Federal styling a place of permanence in American Architecture. Shuttered windows give added warmth to the exterior of textured brick and wood. The design pictured above is but one of the distinguished exteriors created for The Somerset House by Patterson & Worland, A.I.A.

KETTLER BROTHERS, INC.

Plans copyrighted by Patterson & Worland, A.I.A., and Kettler Brothers, Inc.

THE SOMERSET HOUSE

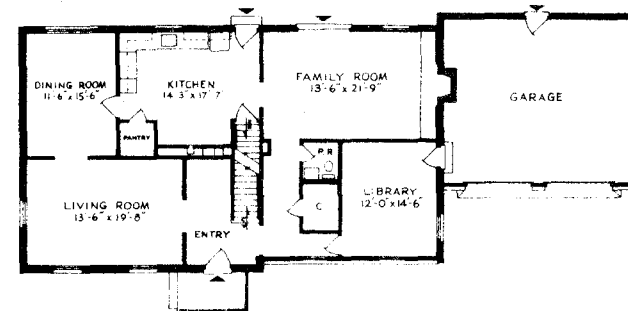
3



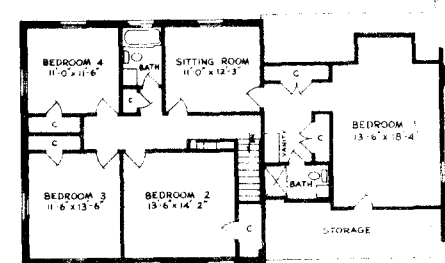
The Somerset has a deep respect for privacy built into its plan. The large foyer welcomes guests cordially and either leads them into the formal area or the activity wing of the home. Elegant entertaining may be easily coordinated between the private living room and the adjacent dining room. The large dining room has been designed as a completely separate room to accommodate guests or family. The kitchen is truly the nucleus of the Somerset House, as it is convenient to every room on the first floor. Of course, it contains a famous Kettler pantry as well as its own delightful informal alcove for family dining. The beamed kitchen ceiling contributes to the traditional flavor which dominates the entire home. A feeling of warmth and contentment in the family room is reflected by the raised hearth fireplace and sliding glass door to the garden. The private library will serve as a restful and relaxing haven for those who wish to be alone. And, of course, the powder room located on this level is very handy. Note the convenient access to the bright basement where you have all the space you want for laundry, hobby shop, play and storage.

Upstairs, the emphasis again is on individual privacy. The owners' will have an unusually spacious bedroom, double closet, a private bath, dressing room, and smart vanity. Adjoining this suite is a versatile owner's sitting room which could be, if needed, used as a nursery without inconvenience. Three large bedrooms with lots of closet space comprise the children's wing. A family bath, linen closet, and laundry chute will be appreciated by the whole family. A convenient cubby-hole and pull down stairway to the attic provide all of your storage needs.

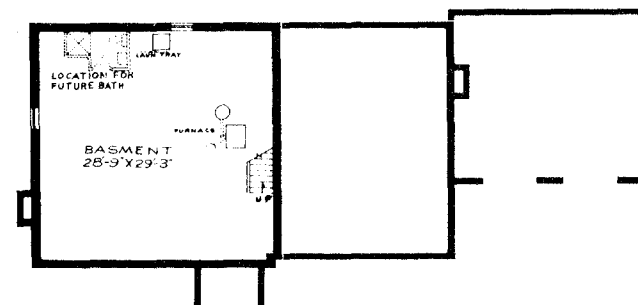
The Somerset House will fulfill every member of the family's need for privacy and containment.



LOWER LEVEL



UPPER LEVEL



BASEMENT

KETTLER BROTHERS, INC.

Plans copyrighted by Patterson & Worland, A.I.A., and Kettler Brothers, Inc.