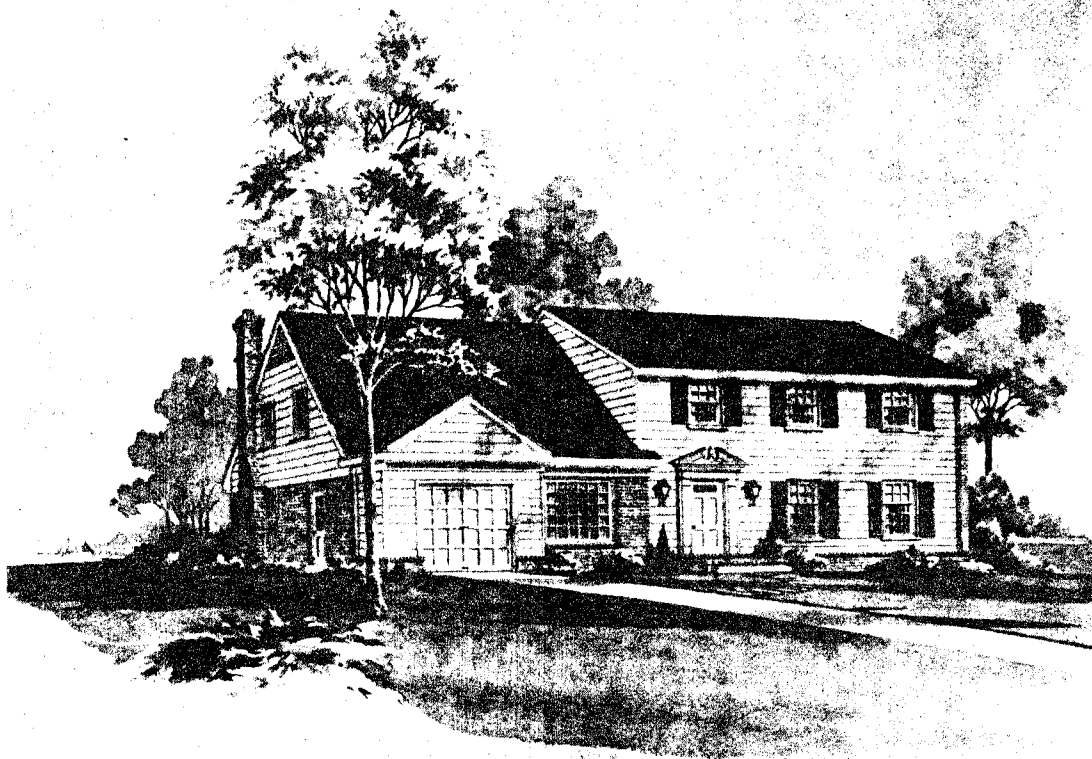


THE TALBOT HOUSE

The first settlement of whites on the eastern shore of the Chesapeake Bay was near Stevensville, on Kent Island, where the inhabitants were relatively free from sudden attacks by the Indians. For nearly two decades after the settlement on the island no attempts at gaining a foothold on the mainland are on record.

But on July 5, 1652, by a treaty the Susquehanna Indians granted to the whites the right of settlement along both sides of the Bay, from the head of it to the Patuxent on the western shore and the Choptank on the eastern. From that time, the prospect of relative security seems to have stimulated migration landward along the shores of the Choptank, Chester, and intervening estuaries.

This growth of population on the mainland was met by the erection of Talbot County about 1661. This makes it one of the oldest counties on the Eastern Shore, and since it was instituted almost as soon as the first settlement began it has the distinction of never in its history having been under the jurisdiction of any other county.



An eloquent expression of the charm that denotes the finest in traditional architecture, the Talbot blends the style of yesterday with the convenience of tomorrow. The design pictured above is but one of the distinguished exteriors created for The Talbot House by Patterson & Worland, A.I.A.

KETTLER BROTHERS, INC.

Plans copyrighted by Patterson & Worland, A.I.A., and Kettler Brothers, Inc.



The Talbot House combines heritage styling with modern efficiency. The architect has begun with enduring standards of good taste, then added intelligent interior planning and the accouterments of gracious modern living.

A large foyer leads to the informal, relaxed atmosphere of the family room with its cozy, raised-hearth fireplace, or to the living room and large dining room—designed for formal entertaining. The wood beams add special warmth to the fully-equipped kitchen, centrally placed for both family room snacks and dining room service. The famous Kettler pantry and informal family dining alcove provide welcome aids for the busy homemaker. The convenient powder room and the large walk-in coat closet, contribute to the living ease and pleasure of the Talbot.

A large basement provides the utility area, additional space for recreational activities and bulk storage. The convenient garage is only steps from the kitchen, the coat closet and powder room.

The Upper Level

The owners' suite assures complete privacy. In addition to the large bedroom it has its own sitting room, dressing room and bath, large closets and adjoining storage room. The three large children's bedrooms share a centrally located bath, linen closet, laundry chute, and, of course, plenty of individual closet space. Note also, the extra width of the upper hall, with alcove at the end, provides a refreshing opportunity for decorating.

KETTLER BROTHERS, INC.

Plans copyrighted by Patterson & Worland, A.I.A., and Kettler Brothers, Inc.

THE TALBOT HOUSE

